



D-LINE FLANGES HAVE A YELLOW COATED PAINTING THAT IMPROVES ITS BEHAVIOUR AGAINST CORROSION ENVIRONMENTS.

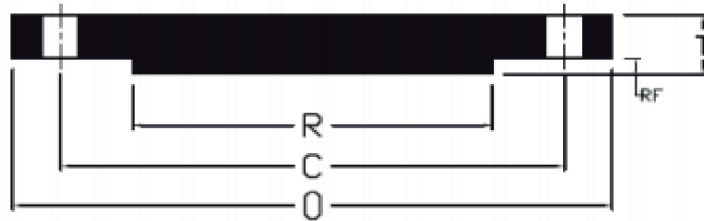
THE BLIND FLANGE IS COMMONLY USED IN PETROCHEMICAL, PIPE ENGINEERING, PUBLIC SERVICES AND WATER WORKS AND HAS THE PURPOSE TO BLOCK OFF A SECTION IN A PIPELINE OR A NOZZLE THAT IS NOT USED. BLIND FLANGES CAN BE RAISED FACE (RF), FLAT FACE (FF) OR RING JOINT FACE (RTJ).

A BLIND FLANGE ALLOWS TO REPAIR OR PERFORM ONGOING MAINTANANCE TO PIPELINES AND MAKES POSSIBLE AN EXPANSION OR CONTINUATION OF THE PIPELINE.

D-LINE HAS THE CAPACITY TO STORE AND MEET THE MARKET REQUIREMENTS WITH FLANGES THAT ARE FABRICATED AS THE STANDARDS ANSI / ASME B16.5 & ANSI / ASME B16.47 ESTABLISH AND TO RESIST SOUR SERVICES SUCH AS NACE MR-0175

SIZE	MATERIALS
1/2" - 54"	FORGED STEEL A105N / STAINLESS STEEL 304L / STAINLESS STEEL 316L

SIZE	STANDARD	SERVICES
1/2" - 24"	ANSI / ASME B16.5	NACE MR-0175
26" - 54"	ANSI / ASME B16.47	NACE MR-0175



BLIND FLANGES CLASS 150 ANSI / ASME B16.5

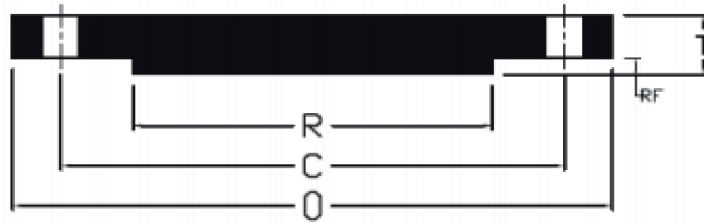
NOMINAL PIPE SIZE	OUTSIDE DIAMETER (O)	THICKNESS (T)	RAISED FACE DIAMETER (R)	NUMBER OF HOLES	DIAMETER OF HOLES	BOLT CIRCLE (C)	APPROXIMATE WEIGHT (KG)
1/2"	3.50	0.44	1.38	4.00	0.63	2.38	0.43
3/4"	3.88	0.50	1.69	4.00	0.63	2.75	0.63
1"	4.25	0.56	2.00	4.00	0.63	3.13	0.89
1 1/4"	4.63	0.63	2.50	4.00	0.63	3.50	1.20
1 1/2"	5.00	0.69	2.88	4.00	0.63	3.88	1.58
2"	6.00	0.75	3.63	4.00	0.75	4.75	2.39
2 1/2"	7.00	0.88	4.13	4.00	0.75	5.50	4.07
3"	7.50	0.94	5.00	4.00	0.75	6.00	4.92
3 1/2"	8.50	0.94	5.50	8.00	0.75	7.00	5.91
4"	9.00	0.94	6.19	8.00	0.75	7.50	7.13
5"	10.00	0.94	7.13	8.00	0.88	8.50	8.72
6"	11.00	1.00	8.50	8.00	0.88	9.50	11.40
8"	13.50	1.13	10.63	8.00	0.88	11.75	20.10
10"	16.00	1.19	12.75	12.00	1.00	14.25	28.70
12"	19.00	1.25	15.00	12.00	1.00	17.00	43.80
14"	21.00	1.38	16.25	12.00	1.13	18.75	58.20
16"	23.50	1.44	18.50	16.00	1.13	21.25	77.40
18"	25.00	1.56	21.00	16.00	1.25	22.75	94.00
20"	27.50	1.69	23.00	20.00	1.25	25.00	122.70
22"	29.50	1.81	25.25	20.00	1.38	27.25	161.17
24"	32.00	1.88	27.25	20.00	1.38	29.50	187.00

*WEIGHT IS ESTIMATED

*DIMENSIONS ARE EXPRESSED IN INCHES

*FLANGES WILL BE FURNISHED WITH A 1/16" RAISED FACE UNLESS OTHERWISE SPECIFIED

*FLAT FACE OPTION AVAILABLE



BLIND FLANGES CLASS 150 ASME B16.47 SERIE A

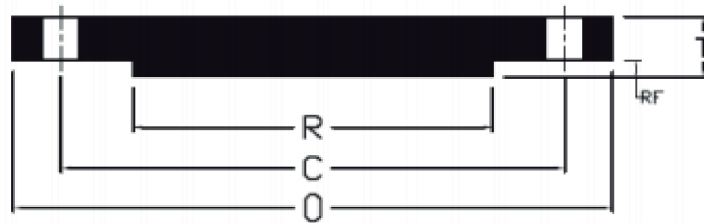
NOMINAL PIPE SIZE	OUTSIDE DIAMETER (O)	THICKNESS (T)	RAISED FACE DIAMETER (R)	NUMBER OF HOLES	DIAMETER OF HOLES	BOLT CIRCLE (C)	APPROXIMATE WEIGHT (KG)
26"	34.2	2.69	29.50	24.00	1.38	31.75	320.00
28"	36.50	2.81	31.50	28.00	1.38	34.00	380.00
30"	38.75	2.94	33.75	28.00	1.38	36.00	450.00
32"	41.75	3.19	36.00	28.00	1.62	38.50	565.00
34"	43.75	3.2	38.00	32.00	1.62	40.50	630.00
36"	46.00	3.56	40.25	32.00	1.62	42.75	765.00
38"	48.75	3.44	42.25	32.00	1.62	45.25	825.00
40"	50.75	3.56	44.25	36.00	1.62	47.25	930.00
42"	53.00	3.81	47.00	36.00	1.62	49.50	1080.00
44"	55.25	4.00	49.00	40.00	1.62	51.75	1235.00
46"	57.25	4.06	51.00	40.00	1.62	53.75	1345.00
48"	59.50	4.25	53.50	44.00	1.62	56.00	1520.00
50"	61.75	4.38	55.50	44.00	1.88	58.25	1690.00
52"	64.00	4.56	57.50	44.00	1.88	60.50	1890.00
54"	66.25	4.75	59.50	44.00	1.88	62.75	2110.00

*WEIGHT IS ESTIMATED

*DIMENSIONS ARE EXPRESSED IN INCHES

*FLANGES WILL BE FURNISHED WITH A 1/16" RAISED FACE UNLESS OTHERWISE SPECIFIED

*FLAT FACE OPTION AVAILABLE



BLIND FLANGES CLASS 300 ANSI / ASME B16.5

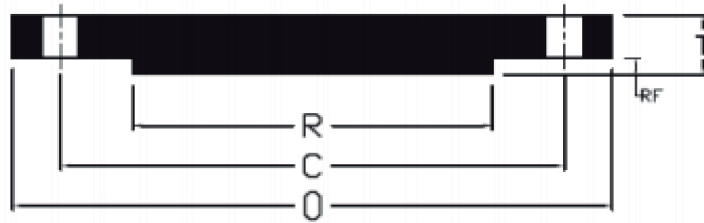
NOMINAL PIPE SIZE	OUTSIDE DIAMETER (O)	THICKNESS (T)	RAISED FACE DIAMETER (R)	NUMBER OF HOLES	DIAMETER OF HOLES	BOLT CIRCLE (C)	APPROXIMATE WEIGHT (KG)
1/2"	3.75	0.56	1.38	4.00	0.63	2.63	0.63
3/4"	4.63	0.63	1.69	4.00	0.75	3.25	1.15
1"	4.88	0.69	2.00	4.00	0.75	3.50	1.40
1 1/4"	5.25	0.75	2.50	4.00	0.75	3.88	1.88
1 1/2"	6.13	0.81	2.88	4.00	0.88	4.50	2.65
2"	6.50	0.88	3.63	8.00	0.75	5.00	3.22
2 1/2"	7.50	1.00	4.13	8.00	0.88	5.88	4.80
3"	8.25	1.13	5.00	8.00	0.88	6.63	6.89
3 1/2"	9.00	1.19	5.50	8.00	0.88	7.25	9.53
4"	10.00	1.25	6.19	8.00	0.88	7.88	11.60
5"	11.00	1.38	7.13	8.00	0.88	9.25	15.89
6"	12.50	1.44	8.50	12.00	0.88	10.63	21.40
8"	15.00	1.63	10.63	12.00	1.00	13.00	34.10
10"	17.50	1.88	12.75	16.00	1.13	15.25	53.50
12"	20.50	2.00	15.00	16.00	1.25	17.75	78.30
14"	23.00	2.13	16.25	20.00	1.25	20.25	105.00
16"	25.50	2.25	18.50	20.00	1.38	22.50	138.60
18"	28.00	2.38	21.00	24.00	1.38	24.75	174.30
20"	30.50	2.50	23.00	24.00	1.38	27.00	220.40
22"	33.00	2.63	25.25	24.00	1.63	29.25	290.00
24"	36.00	2.75	27.25	24.00	1.63	32.00	339.00

*WEIGHT IS ESTIMATED

*DIMENSIONS ARE EXPRESSED IN INCHES

*FLANGES WILL BE FURNISHED WITH A 1/16" RAISED FACE UNLESS OTHERWISE SPECIFIED

*FLAT FACE OPTION AVAILABLE



BLIND FLANGES CLASS 300 ASME B16.47 SERIE A

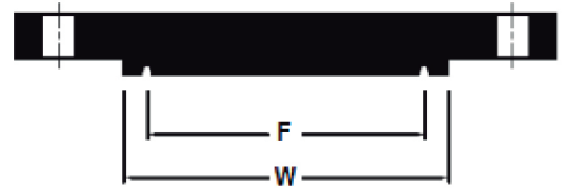
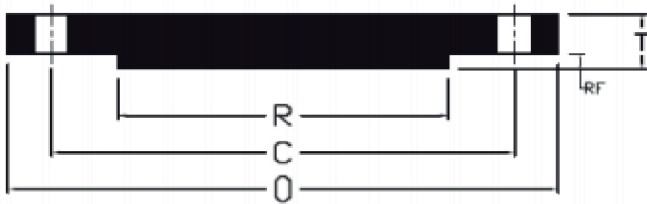
NOMINAL PIPE SIZE	OUTSIDE DIAMETER (O)	THICKNESS (T)	RAISED FACE DIAMETER (R)	NUMBER OF HOLES	DIAMETER OF HOLES	BOLT CIRCLE (C)	APPROXIMATE WEIGHT (KG)
26"	38.25	3.31	29.50	28.00	1.75	34.50	490.00
28"	40.75	3.56	31.50	28.00	1.75	37.00	600.00
30"	43.00	3.75	33.75	28.00	1.88	39.25	700.00
32"	45.25	3.94	36.00	28.00	2.00	41.50	815.00
34"	47.75	4.12	38.00	28.00	2.00	43.50	940.00
36"	50.00	4.38	40.25	32.00	2.12	46.00	1105.00
38"	46.00	4.25	40.50	32.00	1.62	43.00	910.00
40"	48.75	4.50	42.75	32.00	1.75	45.50	1080.00
42"	50.75	4.69	44.75	32.00	1.75	47.50	1220.00
44"	53.25	4.88	47.00	32.00	1.88	49.75	1400.00
46"	55.75	5.06	49.00	28.00	2.00	52.00	1589.00
48"	57.75	5.25	51.25	32.00	2.00	54.00	1770.00
50"	60.25	5.50	53.50	32.00	2.12	56.25	2020.00
52"	62.25	5.69	55.50	32.00	2.12	58.25	2230.00
54"	65.25	6.00	57.75	28.00	2.38	61.00	2580.00

*WEIGHT IS ESTIMATED

*DIMENSIONS ARE EXPRESSED IN INCHES

*FLANGES WILL BE FURNISHED WITH A 1/16" RAISED FACE UNLESS OTHERWISE SPECIFIED

*FLAT FACE OPTION AVAILABLE



BLIND FLANGES CLASS 600 ANSI / ASME B16.5

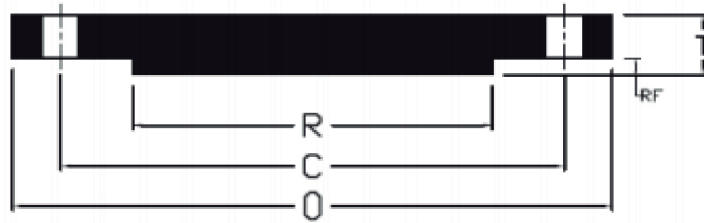
NOMINAL PIPE SIZE	OUTSIDE DIAMETER (O)	THICKNESS (T)	RAISED FACE DIAMETER RF (R)	RAISED FACE DIAMETER RTJ (W)	GROOVED DIAMETER RTJ (F)	NUMBER OF HOLES	DIAMETER OF HOLES	BOLT CIRCLE (C)	APPROXIMATE WEIGHT (KG)
1/2"	3.75	0.56	1.38	2.00	1.34	4.00	0.63	2.63	0.77
3/4"	4.63	0.63	1.69	2.50	1.69	4.00	0.75	3.25	1.37
1"	4.88	0.69	2.00	2.75	2.00	4.00	0.75	3.50	1.66
1 1/4"	5.25	0.81	2.50	3.13	2.38	4.00	0.75	3.88	2.36
1 1/2"	6.13	0.88	2.88	3.56	2.69	4.00	0.88	4.50	3.29
2"	6.50	1.00	3.63	4.25	3.25	8.00	0.75	5.00	4.24
2 1/2"	7.50	1.13	4.13	5.00	4.00	8.00	0.88	5.88	6.23
3"	8.25	1.25	5.00	5.75	4.88	8.00	0.88	6.63	8.63
3 1/2"	9.00	1.38	5.50	6.25	5.19	8.00	1.00	7.25	13.17
4"	10.75	1.50	6.19	6.88	5.88	8.00	1.00	8.50	17.70
5"	13.00	1.75	7.13	8.25	7.13	8.00	1.13	10.50	30.87
6"	14.00	1.88	8.50	9.50	8.31	12.00	1.13	11.50	36.20
8"	16.50	2.19	10.63	11.88	10.63	12.00	1.25	13.75	59.10
10"	20.00	2.50	12.75	14.00	12.75	16.00	1.38	17.00	98.40
12"	22.00	2.63	15.00	16.25	15.00	20.00	1.38	19.25	125.30
14"	23.75	2.75	16.25	18.00	16.50	20.00	1.50	20.75	152.10
16"	27.00	3.00	18.50	20.00	18.50	20.00	1.63	23.75	214.10
18"	29.25	3.25	21.00	22.63	21.00	20.00	1.75	25.75	275.40
20"	32.00	3.50	23.00	25.00	23.00	24.00	1.75	28.50	352.40
22"	34.25	3.75	25.25	27.00	25.00	24.00	1.88	30.63	454.00
24"	37.00	4.00	27.25	29.50	27.25	24.00	2.00	33.00	536.80

*WEIGHT IS ESTIMATED

*DIMENSIONS ARE EXPRESSED IN INCHES

*FLANGES WILL BE FURNISHED WITH A 1/4" RAISED FACE UNLESS OTHERWISE SPECIFIED

*FLAT FACE OPTION AVAILABLE



BLIND FLANGES CLASS 600 ASME B16.47 SERIE A

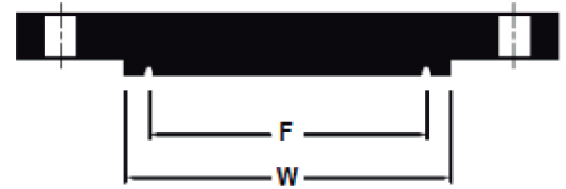
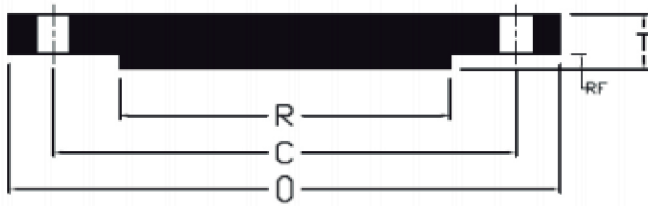
NOMINAL PIPE SIZE	OUTSIDE DIAMETER (O)	THICKNESS (T)	RAISED FACE DIAMETER (R)	NUMBER OF HOLES	DIAMETER OF HOLES	BOLT CIRCLE (C)	APPROXIMATE WEIGHT (KG)
26"	40.00	4.94	29.50	28.00	2.00	36.00	800.00
28"	42.25	5.19	31.50	28.00	2.12	38.00	936.00
30"	44.50	5.50	33.75	28.00	2.12	40.25	1100.00
32"	47.00	5.81	36.00	28.00	2.38	42.50	1300.00
34"	49.00	6.06	38.00	28.00	2.38	44.50	1470.00
36"	51.75	6.38	40.25	28.00	2.62	47.00	1725.00

*WEIGHT IS ESTIMATED

*DIMENSIONS ARE EXPRESSED IN INCHES

*FLANGES WILL BE FURNISHED WITH A 1/4" RAISED FACE UNLESS OTHERWISE SPECIFIED

*FLAT FACE OPTION AVAILABLE



BLIND FLANGES CLASS 900 ANSI / ASME B16.5

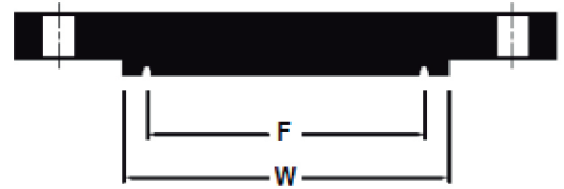
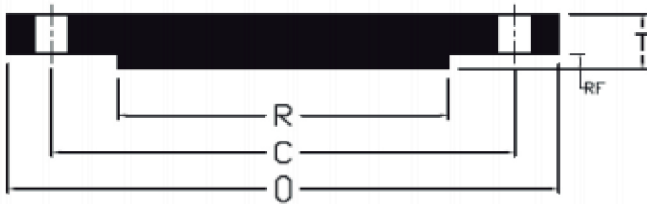
NOMINAL PIPE SIZE	OUTSIDE DIAMETER (O)	THICKNESS (T)	RAISED FACE DIAMETER RF (R)	RAISED FACE DIAMETER RTJ (W)	GROOVED DIAMETER RTJ (F)	NUMBER OF HOLES	DIAMETER OF HOLES	BOLT CIRCLE (C)	APPROXIMATE WEIGHT (KG)
1/2"	4.75	0.88	1.38	2.38	1.56	4.00	0.88	3.25	1.78
3/4"	5.13	1.00	1.69	2.63	1.75	4.00	0.88	3.50	2.43
1"	5.88	1.13	2.00	2.81	2.00	4.00	1.00	4.00	3.65
1 1/4"	6.25	1.13	2.50	3.19	2.38	4.00	1.00	4.38	4.27
1 1/2"	7.00	1.25	2.88	3.63	2.69	4.00	1.13	4.88	5.93
2"	8.50	1.50	3.63	4.88	3.75	8.00	1.00	6.50	10.00
2 1/2"	9.63	1.63	4.13	5.38	4.25	8.00	1.13	7.50	14.00
3"	9.50	1.50	5.00	6.13	4.88	8.00	1.00	7.50	15.10
4"	11.50	1.75	6.19	7.13	5.88	8.00	1.25	9.25	21.80
5"	13.75	2.00	7.13	8.50	7.13	8.00	1.38	11.00	34.80
6"	15.00	2.19	8.50	9.50	8.31	12.00	1.25	12.50	47.50
8"	18.50	2.50	10.63	12.13	10.63	12.00	1.50	15.50	82.40
10"	21.50	2.75	12.75	14.25	12.75	16.00	1.50	18.50	122.20
12"	24.00	3.13	15.00	16.50	15.00	20.00	1.50	21.00	173.70
14"	25.25	3.38	16.25	18.38	16.50	20.00	1.63	22.00	205.70
16"	27.75	3.50	18.50	20.63	18.50	20.00	1.75	24.25	259.90
18"	31.00	4.00	21.00	23.38	21.00	20.00	2.00	27.00	366.90
20"	33.75	4.25	23.00	25.50	23.00	20.00	2.13	29.50	461.00
24"	41.00	5.50	27.25	30.38	27.25	20.00	2.63	35.50	874.00

*WEIGHT IS ESTIMATED

*DIMENSIONS ARE EXPRESSED IN INCHES

*FLANGES WILL BE FURNISHED WITH A 1/4" RAISED FACE UNLESS OTHERWISE SPECIFIED

*FLAT FACE OPTION AVAILABLE



BLIND FLANGES CLASS 1500 ANSI / ASME B16.5

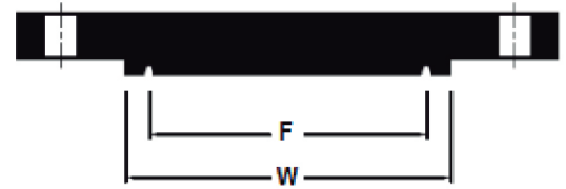
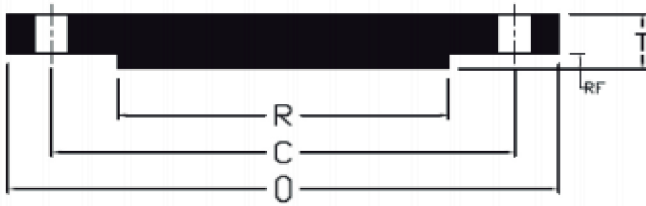
NOMINAL PIPE SIZE	OUTSIDE DIAMETER (O)	THICKNESS (T)	RAISED FACE DIAMETER RF (R)	RAISED FACE DIAMETER RTJ (W)	GROOVED DIAMETER RTJ (F)	NUMBER OF HOLES	DIAMETER OF HOLES	BOLT CIRCLE (C)	APPROXIMATE WEIGHT (KG)
1/2"	4.75	0.88	1.38	2.38	1.56	4.00	0.88	3.25	1.78
3/4"	5.13	1.00	1.69	2.63	1.75	4.00	0.88	3.50	2.43
1"	5.88	1.13	2.00	2.81	2.00	4.00	1.00	4.00	3.65
1 1/4"	6.25	1.13	2.50	3.19	2.38	4.00	1.00	4.38	4.27
1 1/2"	7.00	1.25	2.88	3.63	2.69	4.00	1.13	4.88	5.93
2"	8.50	1.50	3.63	4.88	3.75	8.00	1.00	6.50	10.00
2 1/2"	9.63	1.63	4.13	5.38	4.25	8.00	1.13	7.50	14.00
3"	10.50	1.88	5.00	6.63	5.38	8.00	1.25	8.00	19.00
4"	12.25	2.13	6.19	7.63	6.38	8.00	1.38	9.50	29.70
5"	14.75	2.88	7.13	9.00	7.63	8.00	1.63	11.50	58.80
6"	15.50	3.25	8.50	9.75	8.31	12.00	1.50	12.50	72.50
8"	19.00	3.63	10.63	12.50	10.63	12.00	1.75	15.50	122.70
10"	23.00	4.25	12.75	14.63	12.75	12.00	2.00	19.00	211.50
12"	26.50	4.88	15.00	17.25	15.00	16.00	2.13	22.50	317.40
14"	29.50	5.25	16.25	19.25	16.50	16.00	2.38	25.00	422.70
16"	32.50	5.75	18.50	21.50	18.50	16.00	2.63	27.75	557.20
18"	36.00	6.38	21.00	24.13	21.00	16.00	2.88	30.50	760.60
20"	38.75	7.00	23.00	26.50	23.00	16.00	3.13	32.75	966.60
24"	46.00	8.00	27.25	31.25	27.25	16.00	3.63	39.00	1560.00

*WEIGHT IS ESTIMATED

*DIMENSIONS ARE EXPRESSED IN INCHES

*FLANGES WILL BE FURNISHED WITH A 1/4" RAISED FACE UNLESS OTHERWISE SPECIFIED

*FLAT FACE OPTION AVAILABLE



BLIND FLANGES CLASS 2500 ANSI / ASME B16.5

NOMINAL PIPE SIZE	OUTSIDE DIAMETER (O)	THICKNESS (T)	RAISED FACE DIAMETER RF (R)	RAISED FACE DIAMETER RTJ (W)	GROOVED DIAMETER RTJ (F)	NUMBER OF HOLES	DIAMETER OF HOLES	BOLT CIRCLE (C)	APPROXIMATE WEIGHT (KG)
1/2"	5.25	1.19	1.38	2.56	1.69	4.00	0.88	3.50	3.11
3/4"	5.50	1.25	1.69	2.88	2.00	4.00	0.88	3.75	3.56
1"	6.25	1.38	2.00	3.25	2.38	4.00	1.00	4.25	5.50
1 1/4"	7.25	1.50	2.50	4.00	2.84	4.00	1.13	5.13	7.47
1 1/2"	8.00	1.75	2.88	4.50	3.25	4.00	1.25	5.75	10.60
2"	9.25	2.00	3.63	5.25	4.00	8.00	1.13	6.75	15.50
2 1/2"	10.50	2.25	4.13	5.88	4.38	8.00	1.25	7.75	22.40
3"	12.00	2.63	5.00	6.63	5.00	8.00	1.38	9.00	34.90
4"	14.00	3.00	6.19	8.00	6.19	8.00	1.63	10.75	53.80
5"	16.50	3.63	7.13	9.50	7.50	8.00	1.88	12.75	91.50
6"	19.00	4.25	8.50	11.00	9.00	8.00	2.13	14.50	142.50
8"	21.75	5.00	10.63	13.38	11.00	12.00	2.13	17.25	211.50
10"	26.50	6.50	12.75	16.75	13.50	12.00	2.63	21.25	412.60
12"	30.00	7.25	15.00	19.50	16.00	12.00	2.88	24.38	588.20

*WEIGHT IS ESTIMATED

*DIMENSIONS ARE EXPRESSED IN INCHES

*FLANGES WILL BE FURNISHED WITH A 1/4" RAISED FACE UNLESS OTHERWISE SPECIFIED

*FLAT FACE OPTION AVAILABLE