



D-LINE® have dedicated ourselves to provide the highest quality products to meet our customers expectations. D-LINE® "Y" strainers are designed to cover from the most standard application to the most rigorous application industry. **ST58** series offers cast iron body with 300 series stainless steel straining element to cover the industries demands.

Designed to strain elements from liquids, steam, gas, and air in order to prevent particles from flowing further downstream and then causing damage to equipment or components of equipment. "Y" strainers can be easily cleaned-out in order to cause much less disruption to the flow. It can be installed in a vertical or horizontal position.

## **MATERIAL APPLICATIONS**

Cast iron exhibits good malleability and good ductility. Due to the lower silicon content compared to other cast irons, it exhibits good fracture toughness at low temperature. As a result of its good tensile strength and ductility, cast iron is used for electrical fittings and equipment, hand tools, pipe fittings, washers, brackets, farm equipment, mining hardware, and machine parts.

## **DESIGN FEATURES**

### • **LARGE STRAINING CAPACITY**

D-LINE®'s **ST58** strainer has a large body and sizable straining element that provides excellent open area ratios that are typically 2.5 times larger than the corresponding pipeline.

### • **PRECISION MACHINED SEATS**

Screen seats are precisely machined in both body and cap to ensure accurate positioning of the screen during reassembly after cleaning. Also, the machined body seats enable finer filtration by preventing debris bypass.

### • **SELF-CLEANING CAPABILITY**

With a tapped NPT blow-off connection, this unit can be fitted with a blow-down valve which facilitates cleaning of the straining element.

### • **GAUGE TAPS DESIGN**

D-LINE®'s **ST58** has convenient gauge taps furnished with a plug on both sides (inlet and outlet) of sizes 2" through 20". These taps allow for easy installation of pressure gauges to monitor differential pressure and determine when screen cleaning is necessary.

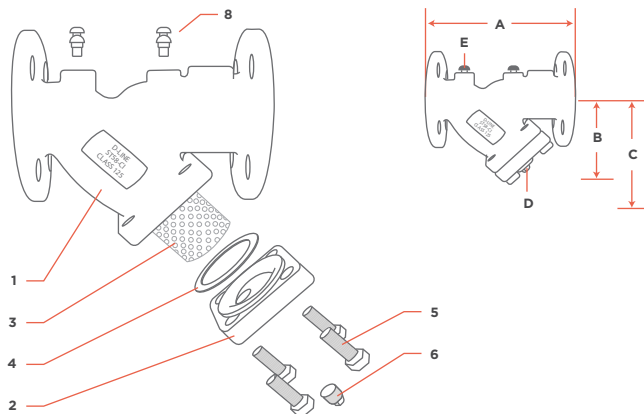
### • **EPOXY PAINTED**

All D-LINE®'s **ST58** strainers are epoxy painted to ensure they resist corrosion and rust.

# DIMENSIONS

BILL OF MATERIAL LIST		
No.	MATERIAL	ST58-CI
1	BODY	ASTM A126 Gr. B
2	COVER	ASTM A126 Gr. B
3	STRAINING ELEMENT	STAINLESS STEEL
4	GASKET	NON-ASBESTOS
5	STUDS	ASTM A193 GR. B7
6	NPT PLUG (BLOW-OFF)	CARBON STEEL
7	NPT PLUG (GAUGE TAPS) <sup>(3)</sup>	CARBON STEEL

1. Bill of materials represents standard materials, equivalent or better materials may be substituted at the manufacturer's discretion.  
 2. Denotes recommended spare parts.  
 3. Part number 7 (NPT PLUG-GAUGE TAPS) are only for sizes 2"-20".



DIMENSIONS & WEIGHTS							
SIZE	A	B	C	D	E	WEIGHT (KG)	FLOW COEFFICIENT (Cv)
2"	7.88	5.25	7.00	0.50	0.25	9.10	70
2-1/2"	10.00	6.50	9.75	1.00	0.25	15.00	110
3"	10.13	7.00	10.00	1.00	0.25	15.40	160
4"	12.12	8.25	12.00	1.50	0.25	27.20	260
5"	15.62	11.25	20.00	2.00	0.25	47.60	400
6"	18.50	13.50	20.00	2.00	0.25	59.00	570
8"	21.63	15.50	22.75	2.00	0.25	107.10	950
10"	25.75	18.50	28.00	2.00	0.25	153.30	1600
12"	29.87	21.75	30.00	2.00	0.25	259.30	2200
14"	33.25	25.00	36.50	2.00	0.25	375.60	3300
16"	38.75	26.50	42.00	2.00	0.25	512.60	4900
18"	43.13	31.00	45.50	2.00	0.25	767.50	6100
20"	49.50	39.00	56.00	2.00	0.25	856.40	8000
24"	58.38	45.00	68.00	2.00	N/A	1360.80	11000

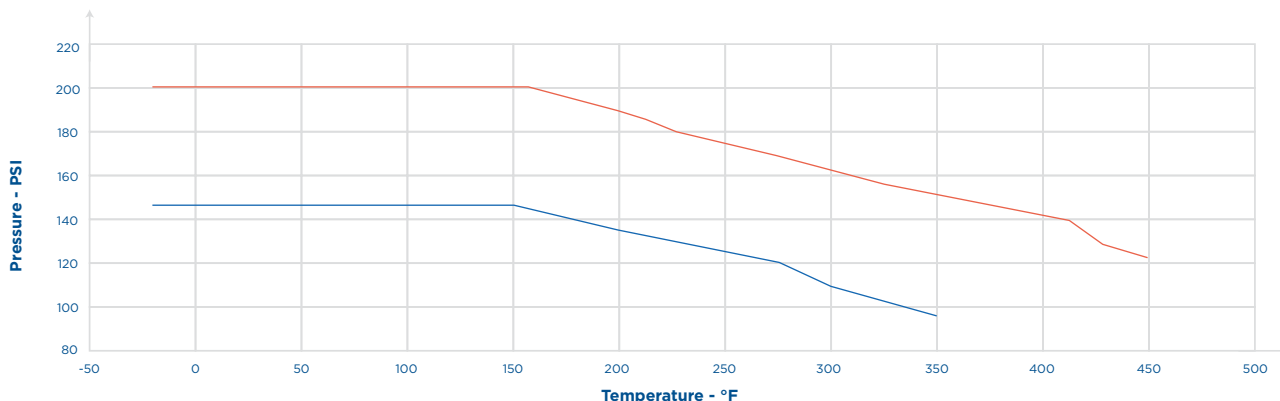
1. Dimensions and weights are for reference only.  
 2. Face to face values includes raised face these dimensions have a tolerance of  $\pm 0.06$  in for sizes 10" & lower for sizes 12" & up  $\pm 0.12$  in.  
 3. Dimensions are expressed in inches.

## PRESSURE-TEMPERATURE RATINGS

This chart displays the pressure-temperature ratings for the valve's body per ASME B 16.1

— 2" - 12" A216 Gr. B ANSI Class 125 — 14" - 24" A216 Gr. B ANSI Class 125

Source: ASME / ANSI B16.42-1998



REFERENCES STANDARDS & CODES	
CODE	DESCRIPTION
ASME B16.1	CAST IRON PIPE FLANGES AND FLANGED FITTINGS

PRESSURE-TEMPERATURE RATINGS		
ASTM A126 GR.B	2" - 12"	14" - 24"
WOG (NON-SHOCK)	200 PSI @ 150° F	150 PSI @ 150° F

SCREEN SELECTION GUIDELINES				
SIZE	LIQUID	OPEN AREA	STEAM	OPEN AREA
2" - 4"	1/16"	41%	3/64"	36%
5" - 8"	1/8"	40%	3/64"	36%
10" - 16"	1/8"	40%	30 MESH	44.80%

LIQUID SCREEN PERFORMANCE AS STANDARDS FOR OTHER SCREEN PERFORMANCE PLEASE CONSULT FACTORY.