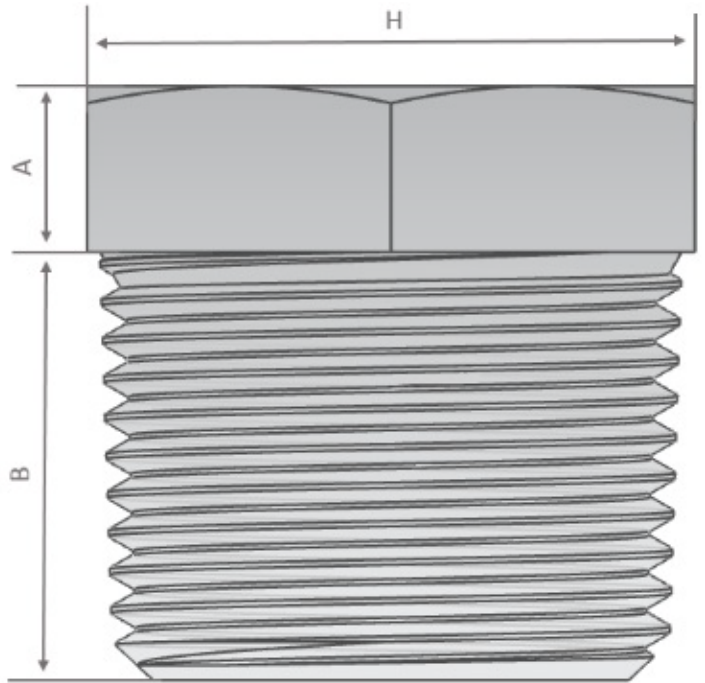
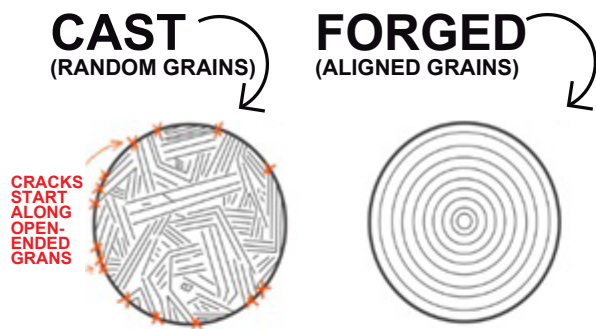


FORGING IS A MANUFACTURING PROCESS WHERE METALS IS MODELED BY APPLYING PRESSURE. ASTM FORGED CARBON STEEL GRADE A105 IS A LOW CARBON, MANGANESE AND SILICON CONTAINING STEEL.

DUE TO IT'S GRAIN STRUCTURE, FORGED STEEL HAVE A GREAT ADVANTAGE AGAINST CAST STEEL BEING MORE SOLID AND CONSISTENT.

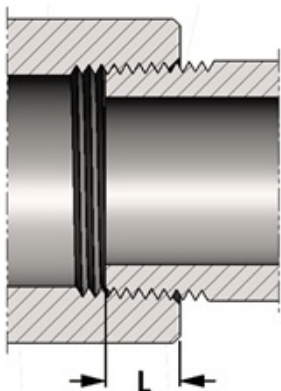
FORGED STEEL IS COMMONLY USED IN THE INDUSTRIES OF OIL & GAS, AIRCRAFT & SHIP, AUTOMOTIVE, AGRICULTURE, HAND TOOLS & HARDWARE, GENERAL.



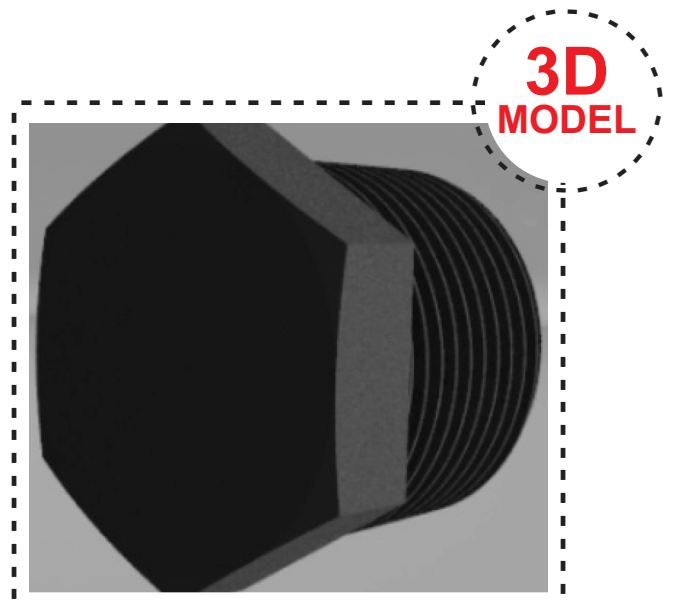
CLASS 3000

| SIZE | 1/8" | 1/4" | 3/8" | 1/2" | 3/4" | 1" | 1-1/4" | 1-1/2" | 2" | 2-1/2" | 3" | 4" |
|-------------|-------|-------|-------|-------|-------|-------|--------|--------|-------|--------|-------|-------|
| A | 0.236 | 0.236 | 0.315 | 0.394 | 0.433 | 0.512 | 0.551 | 0.630 | 0.709 | 0.748 | 0.827 | 0.984 |
| B | 0.394 | 0.433 | 0.512 | 0.551 | 0.630 | 0.748 | 0.827 | 0.827 | 0.866 | 1.063 | 1.102 | 1.260 |
| H | 0.433 | 0.630 | 0.709 | 0.866 | 1.063 | 1.417 | 1.811 | 1.969 | 2.560 | 2.953 | 3.543 | 4.528 |
| WEIGHT (KG) | 0.01 | 0.03 | 0.05 | 0.07 | 0.14 | 0.22 | 0.44 | 0.59 | 1.03 | 1.80 | 2.60 | 5.20 |

LENGHT OF THREAD SCREWED INTO FITTING



| SIZE | L |
|--------|-------|
| 1/8" | 0.264 |
| 1/4" | 0.395 |
| 3/8" | 0.407 |
| 1/2" | 0.534 |
| 3/4" | 0.553 |
| 1" | 0.681 |
| 1-1/4" | 0.709 |
| 1-1/2" | 0.724 |
| 2" | 0.756 |
| 2-1/2" | 0.933 |
| 3" | 1.016 |
| 4" | 1.094 |



DIMENSIONS ARE
EXPRESSED IN INCHES