



D-LINE® Forged steel fittings are manufactured in process allows to develop products with a consistent and unyielding quality. We maintain a strict quality control under the ASME B16.11, MSS SP-79, MSS SP-83, and MSS SP-97 requirements making our manufacturing process one of the best in the market.

All D-LINE® carbon forged steel fittings are zinc-phosphate coated for superior corrosion resistance.

APPLICATIONS

D-LINE® Forged fittings serve multi-national end users in a wide range of applications in many industries including:

- Water Treatment
- Mining
- Chemical & Petrochemical
- Ship Building Industries
- Public Services
- Pipe Engineering
- Fire Protection
- General Industries
- Food Industries

DESIGN FEATURES

- Carbon Steel: ASTM A-105
- Class 3000 & 6000
- Dimensions to per ASME B16.11
- Thread to per ASME B1.20.1
- NPT & SW ends available
- Sour gas service to per NACE MR-0175

FORGED STEEL ADVANTAGES

Forged steel offers a great advantage against casting or plating:

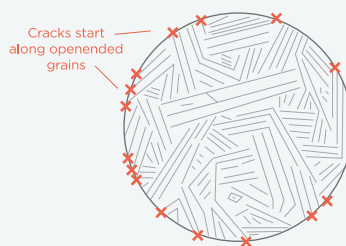
- Saving machining hours
- Better metallic yield
- Improving the grain structure
- Directional flow that enables the improvement of impact and mechanical resistance properties

ASTM forged carbon steel grade A-105 is a low carbon, manganese and silicon containing steel. Forged steel fittings are manufactured in a process where metals is molded by applying pressure.

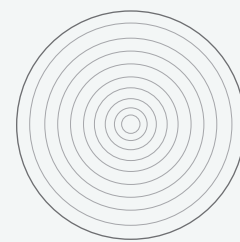
D-LINE® offers the complete product line of forged steel fittings including:

- | | | |
|-------------|----------------|--------------------|
| • Elbows | • Unions | • Laterals |
| • Couplings | • Reducers | • Cross |
| • Tees | • Caps & Plugs | • Outlets and more |

CAST [Random Grains]

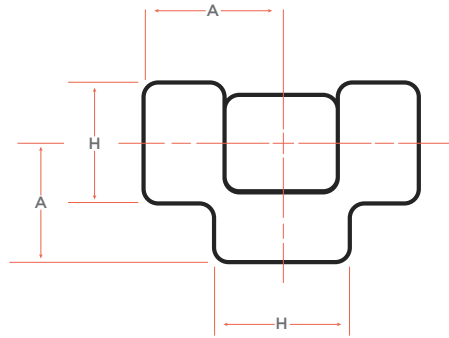


FORGED [Aligned Grains]



DIMENSIONS

THREADED NPT



CLASS 3000 DIMENSIONS AND WEIGHTS

SIZE	1/8"	1/4"	3/8"	1/2"	3/4"	1"	1-1/4"	1-1/2"	2"	2-1/2"	3"	4"
A	0.82	0.98	1.10	1.30	1.50	1.73	2.01	2.36	2.52	3.25	3.84	4.41
H	0.87	0.98	1.30	1.50	1.81	2.21	2.44	2.95	3.31	3.98	4.75	6.00
WEIGHT (KG)	0.13	0.20	0.38	0.56	0.92	1.49	1.76	3.27	3.53	6.99	10.20	19.13

*WEIGHT IS ESTIMATED

*DIMENSIONS ARE EXPRESSED IN INCHES

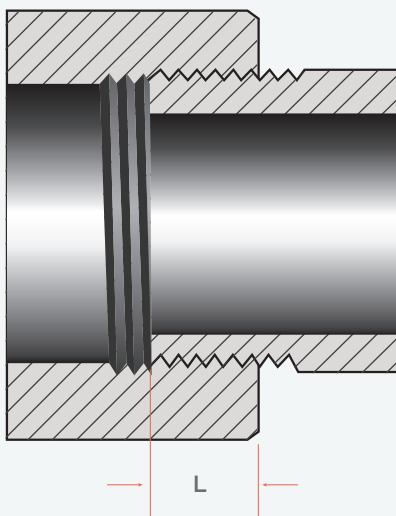
CLASS 6000 DIMENSIONS AND WEIGHTS

SIZE	1/2"	3/4"	1"	1-1/4"	1-1/2"	2"	2-1/2"	3"
A	1.50	1.75	2.00	2.38	2.50	3.25	3.75	4.19
H	1.81	2.19	2.44	2.97	3.31	4.00	4.75	5.75
WEIGHT (KG)	1.18	1.93	3.10	4.22	7.59	8.70	25.24	32.51

*WEIGHT IS ESTIMATED

*DIMENSIONS ARE EXPRESSED IN INCHES

LENGTH OF THREAD SCREWED INTO FITTING

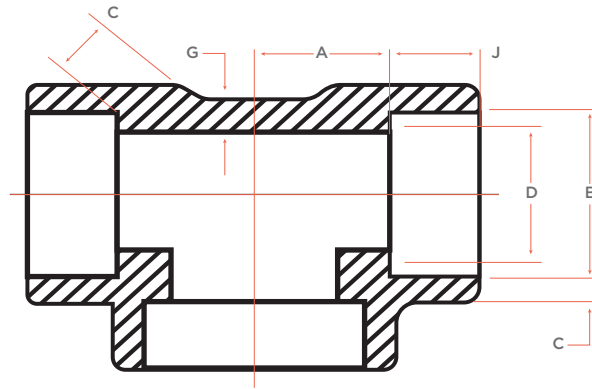


SIZE	L
1/8"	0.273
1/4"	0.395
3/8"	0.407
1/2"	0.534
3/4"	0.553
1"	0.661
1-1/4"	0.681
1-1/2"	0.681

SIZE	L
2"	0.697
2-1/2"	0.933
3"	1.016
3-1/2"	1.071
4"	1.094
5"	1.187
6"	1.208
8"	1.313

DIMENSIONS

SOCKET WELD



CLASS 3000 DIMENSIONS AND WEIGHTS

Size		1/8"	1/4"	3/8"	1/2"	3/4"	1"	1-1/4"	1-1/2"	2"	2-1/2"	3"	4"
B	Max.	0.44	0.58	0.71	0.88	1.09	1.35	1.70	1.94	2.43	2.93	3.56	4.57
	Min.	0.42	0.56	0.69	0.86	1.07	1.33	1.68	1.92	2.41	2.91	3.54	4.55
D	Max.	0.30	0.39	0.52	0.86	0.85	1.08	1.41	1.64	2.10	2.53	3.13	4.09
	Min.	0.24	0.33	0.46	0.65	0.79	1.02	1.35	1.58	2.04	2.41	3.01	3.97
C	Avg.	0.13	0.15	0.16	0.18	0.19	0.22	0.24	0.25	0.27	0.35	0.38	0.42
	Min.	0.13	0.13	0.14	0.16	0.17	0.20	0.21	0.22	0.24	0.30	0.33	0.37
G	Min.	0.10	0.12	0.13	0.15	0.15	0.18	0.19	0.20	0.22	0.28	0.30	0.34
J	Min.	0.38	0.38	0.38	0.38	0.50	0.50	0.50	0.50	0.62	0.62	0.62	0.75
A		0.44	0.44	0.53	0.62	0.75	0.88	1.06	1.25	1.50	1.62	2.25	2.62
WEIGHT (KG)		0.44	0.41	0.81	1.18	1.93	3.10	4.22	7.59	8.70	15.09	25.00	32.51

Dimensions are expressed in inches
Weight is estimated

CLASS 6000 DIMENSIONS AND WEIGHTS

Size		1/2"	3/4"	1"	1-1/4"	1-1/2"	2"	2-1/2"	3"
B	Max.	0.87	1.08	1.35	1.69	1.93	2.42	2.93	3.56
	Min.	0.85	1.06	1.33	1.67	1.91	2.40	2.90	3.53
D	Max.	0.49	0.64	0.84	1.19	1.36	1.71	2.52	3.12
	Min.	0.43	0.58	0.78	1.13	1.30	1.65	2.40	3.00
C	Avg.	0.23	0.27	0.31	0.31	0.35	0.43	0.34	0.37
	Min.	0.20	0.23	0.27	0.27	0.30	0.37	0.30	0.32
G	Min.	0.18	0.21	0.25	0.25	0.28	0.34	0.27	0.30
J	Min.	0.38	0.50	0.50	0.50	0.50	0.62	0.62	0.62
A		0.75	0.88	1.06	1.25	1.50	1.62	1.62	2.25
WEIGHT (KG)		1.18	0.73	3.10	4.22	7.59	8.70	25.24	32.51

Dimensions are expressed in inches
Weight is estimated

WELDING GAP AND MINIMUM FLAT DIMENSION

